

Should I Participate?

As a volunteer in a clinical research trial, you will not only take on an active role in your own health care, but you will also participate in the development of medical therapies that may offer better treatments and cures for diseases. Gaining access to new research treatments before they become publicly available in the marketplace could provide you with medical treatment that is otherwise not obtainable, ultimately improving the medical care you now receive.

Whatever reason you chose to participate in clinical research, be assured that you are **engaging in the advancement of medical treatments and potential cures for chronic or life-threatening diseases.**

If you think you may qualify for a study or are interested in participating in a research study, call a study specialist at (505) 923-3232.



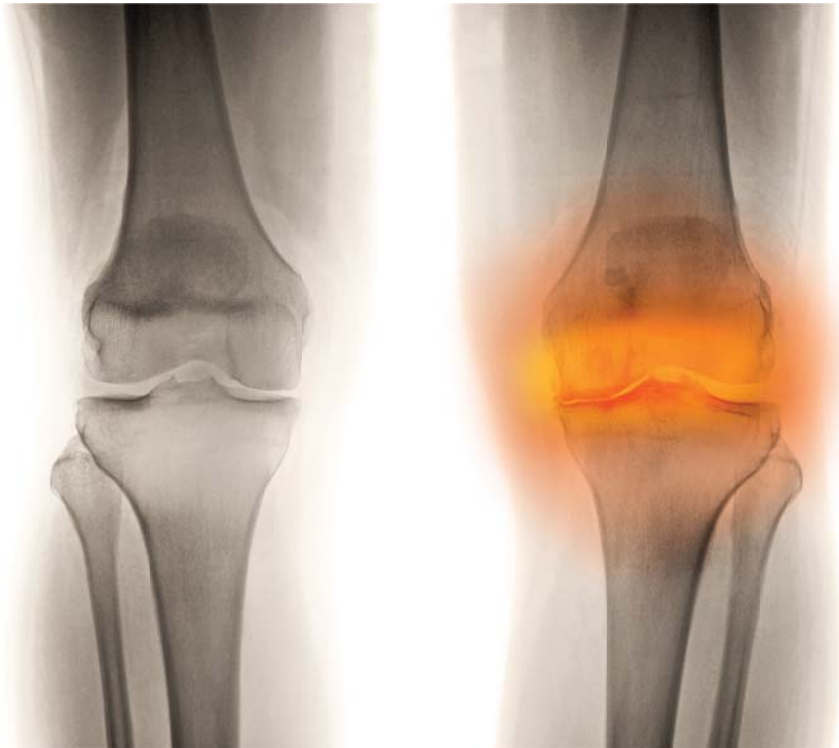
Clinical Research

Osteoarthritis of the Knee

This is a study for patients who have osteoarthritis of the knee. Who have experienced osteoarthritis pain, at least 14 days, out of each month.. You may qualify if you:

- Patients 50 years or older; Women must be postmenopausal for at least 1 yr.
- OA pain for at least 14 days out of each month for at least 3 months

Axsome AXS02_K301



Osteoarthritis of the Knee or Hip

This is a study for patients who have been diagnosed with osteoarthritis of the knee or hip. If you have experienced an allergy or side effects to anti-inflammatory drugs, you may qualify if you are:

- 18 years or older
- Who cannot tolerate Anti-inflammatory medications such as Ibuprophen

Pfizer A4091056

Osteoarthritis of the Knee or Hip

This is a study for patients who have been diagnosed with osteoarthritis of the knee or hip. If you have experienced some benefit from a prescription NSAID therapy, you may be eligible to participate if you are:

- Men or Women, at least 18 years old
- Being treated with an Anti-inflammatory medication such as Ibuprophen

Pfizer A4091058

How are Participants Chosen for a Study?

All clinical trials have guidelines allowing or disallowing a person to qualify for participation. The criteria is based on age, gender, type of disease, previous treatment history, existing medical conditions, and any medications currently being taken. The criteria is used to identify appropriate individuals, ensure their safety during the trial, and provide the researchers with accurate data to answer the question under study.

If you think you may qualify for a study or are interested in participating in a research study, call a study specialist at (505) 923-3232.

Research volunteers are heroes.



Clinical Research

Osteoporosis Drug Holiday

This study is a drug holiday for postmenopausal women or men who are taking Alendronate (Fosamax) or Risedronate (Actonel) for 5 or more years. You may be eligible to qualify for this study if you are:

- > 50 years, Men or Postmenopausal Women, diagnosed with osteoporosis
- Taken Alendronate or Risedronate for 5 or more years

NBHADHI

Sjögren's Syndrome

This study is for patients who have Sjögren's syndrome. Common symptoms of this condition include chronic dry eyes, dry mouth, dry skin and some women may even experience vaginal dryness.

- Male or females 18 years or older
- Experience symptoms with Dry eyes or mouth

Eli Lilly 16M-MC-SSAD



Vaginal Dryness

This study is for an investigational medication for women who suffer with moderate to severe vaginal dryness due to menopause. You may be eligible to participate in this study if you are:

- Between 40-80 years of age
- Postmenopausal

Shionogi